



CMT X Series

Fast x Smart x Reliable

cMT X Series

Full Featured Smart HMI

The cMT X Series is more than its outstanding performance. It is also the software focus on data integration, monitoring and the cloud that truly makes the cMT X the smart HMI to have.

✓ Performance

Quad-core CPU

✓ Display

178° Wide Viewing Angle

✓ Capacity

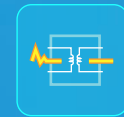
4GB Flash / 1GB RAM

✓ Connectivity

400+ Communication Drivers



Premium Protection⁺



Power Isolation



PCB Coating



NEMA4/
IP66



CE / UL
Certification

01

Powerful Software Features

EasyBuilder Pro p.03

02

Data Integration

OPC UA / Database / MQTT p.05

03

Mobile Monitoring

WebView / cMT Viewer / VNC Viewer p.06

04

Weincloud

Dashboard / EasyAccess 2.0 p.07

05

Wireless Solution

cMT X Series+ M02 WiFi Module p.09

06

Headless HMI

cMT-FHDX / cMT-SVRX p.10

07

Programmable Control

CODESYS / iR Series p.11

cMT X Series Model Types

p.12


Specifications and Dimensions

p.13

Solution 01

Powerful Software Features

EasyBuilder Pro is an editing software that makes creating a unique HMI project easy for everyone, providing an intuitive and aesthetically pleasing UI, useful diagnostic tools, and abundant design resources.

 **Ribbon Style**

An intuitive and aesthetically pleasing user interface.

 **Window Layers**

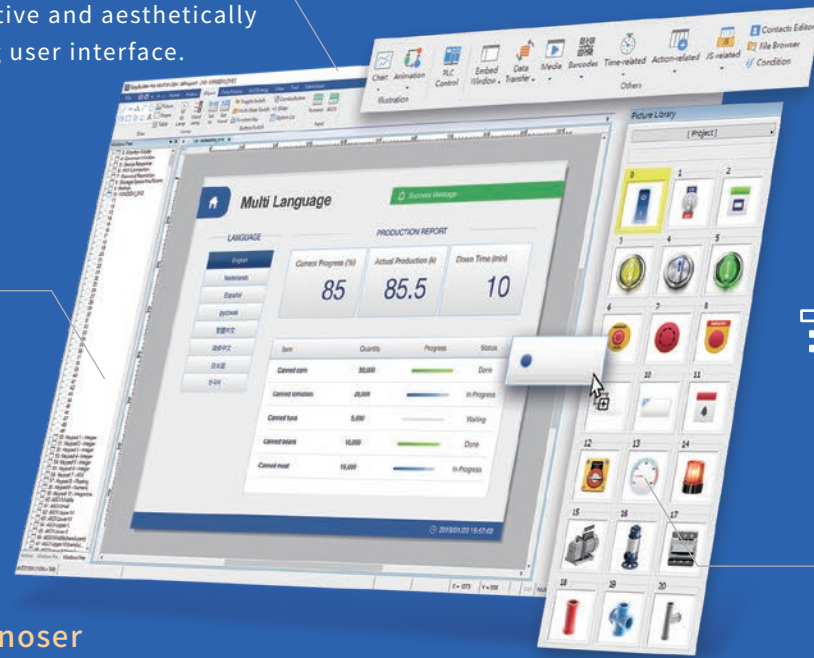
Edit complex projects with ease.

 **Tool: cMT Diagnoser**

Stay on top of your HMI, from data monitoring, communication testing, to code debugging.

 **Tool: Online Simulator**

Verify communication and preview operation result without an actual HMI.



if **Simplified Design Process: Condition Feature**

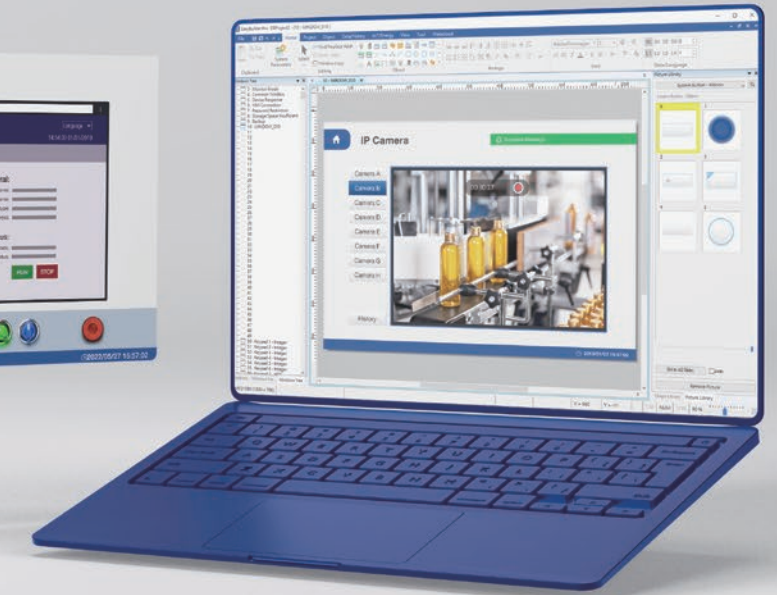
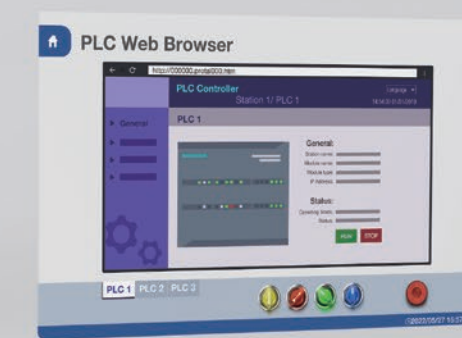
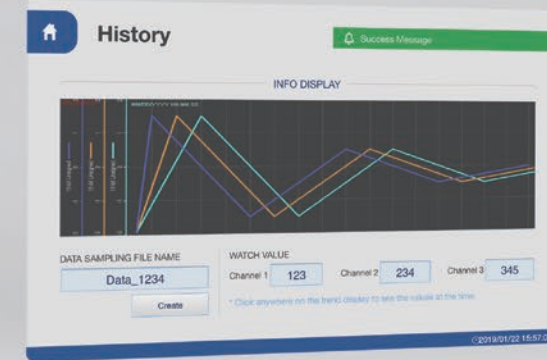
Construct if/else logics with graphical UI instead of codes.

 **Simplified Design Process: Action Feature**

Configure numerous actions with graphical UI to be triggered at once.

 **2000+ Picture Libraries**

Make an eye-catching project with a variety of picture resources.



In addition to common objects such as shapes, buttons, switches, numeric displays, basic charts, and recipes, EasyBuilder Pro further empowers the HMI with advanced capabilities.

 **Multimedia Support**

Watch IP/USB Camera feeds on HMI or use Media Player to play HD videos on HMI.

 **File Transfer and Access**

Use FTP server access to send various files and screenshots on the HMI to the server, or download PDF files, images, and videos from the server to view on the HMI.

 **Web Browser**

Access the webpages of a PLC, a controller, or an embedded device to adjust its system parameters or monitor its status.

 **Data Processing**

Synchronize historical data of Data Log, Event Log, and Operation Log to an external database, and, where necessary, check for their data integrity.

 **Safety and Security**

Login via the HMI's own security server, or via external server in LDAP mode which features centralized account administration for more effective security management.

 **Feature Customization**

Use JavaScript to customize features beyond what is provided and connect to API to enable applications.



Solution 02

Data Integration

400+ device protocols as well as IIoT protocol support and database connectivity aid in data integration



Industrial Protocol Integration

Supported industrial protocol standards include OPC UA and Modbus TCP/IP, interconnecting all onsite devices and facilitating integration with the hosts.

Why OPC UA?

OPC UA is the de-facto industrial communication standard. It features openness, interconnectivity, interoperability, security and reliability.



MQTT Cloud Integration

The cMT X Series supports MQTT, a lightweight protocol that makes it easy to send telemetry to cloud and big data systems.

Accelerating IoT Integration

In EasyBuilder Pro, MQTT connection setup to AWS, Azure, and Google IoT platforms are greatly simplified.



Database Integration

Send data to a database or an IT System where data can then be more efficiently processed using SQL commands.

Supported Databases

Database support includes MySQL, MS SQL and their related version: MariaDB, Azure SQL Database

Solution 03

Mobile Monitoring

Choose the best means of monitoring depending on your application



VNC Viewer

Monitor the HMI with VNC Viewer.



WebView

Monitor the HMI on a web browser, be it Chrome or Safari.

EasyWeb

View historical datalog and event log in a webpage.



cMT Viewer App

Use the cMT Viewer for secure and efficient HMI monitoring featuring:

- Cross-platform support (PC/Mobile)
- Multi-HMI / multi-user monitoring
- Control Token safety mechanism

Monitor Mode

View up to 20 HMI screens concurrently within a screen for maximum efficiency.



Google Play



App Store

Solution 04

Weincloud

Dashboard × EasyAccess 2.0

With Dashboard and EasyAccess 2.0, begin remote monitoring or maintenance anywhere and anytime



EasyAccess 2.0



Dashboard Dashboard Monitoring

Dashboard visualization helps obtain status overview and gain insights instantly.

Easy Deployment

No server hosting required.

Intuitive UI

Build a dashboard with the web-based, drag and drop editor in no time.

Data Visualization

Aggregate data from different sources and display them on a single page.

Widget Variety

Create a dashboard of your own, choosing from a variety of widgets.

Secure Transmission

Data security backed by full SSL/TLS encryption.

Data Integrity

Data completeness ensured by the data retention feature in the event of network issue.

EasyAccess 2.0 Remote Connection Service

Remote connection, alarm push notifications, and PLC pass-through make it possible to monitor HMI or carry out maintenance anywhere, anytime.

Solution 05

Wireless Solution

Modular WiFi design enables wireless connectivity for more HMIs, helping to tackle situations where wiring may be difficult.



cMT1106X / cMT2108X2 / cMT3102X / cMT3108XH / cMT3108XP



cMT X Series + M02 WiFi Module

Less Delay | Higher Speed | Wider Range | Better Deployment

1. IEEE 802.11b/g/n with WPA/WPA2 security allows safe transmission of data in complex industrial environments.
2. The magnetic mount antenna can be installed at an optimal location to maximize signal strength.
3. WiFi hotspot makes it easy to access HMI.

Solution 06

Headless HMI

Compact and well-suited in a control cabinet, a headless HMI can be used with screens of various sizes or monitored with cMT Viewer on a tablet, mobile phone, or computer.

cMT-FHDX-820

Supporting video output via HDMI, its size and resolution is not limited by current HMI offerings. Software features are comparable to those of cMT X Advanced.



cMT-SVRX-820/822

The latest server-type HMI is the perfect manifestation of the cMT X architecture, and the cMT Viewer app is all it needs to start mobile monitoring.

* Other wireless models: cMT-SVR-200 / cMT-SVR-202

Solution 07

Programmable Control

HMI Integrated with CODESYS PLC Controller System + iR Series Module



Controller

HMI + CODESYS

An HMI-CODESYS integrated controller, where the CODESYS runs independently on one CPU core; i.e., HMI and CODESYS do not affect each other.

cMT-CTRL01

An IIoT controller that integrates CODESYS and IIoT Gateway.



iR Series

iR-ETN40R

A compact device that integrates an Ethernet coupler and Digital I/O, providing a one-piece, cost-effective solution.

I/O Module

Coupler protocol: MODBUS TCP/IP, EtherNet/IP, CANopen and EtherCAT
 I/O Module: Digital and Analog I/O, Temperature Module, and Single-axis Motion Control Module

Basic

meeting the essential needs

cMT X Basic features essential UI elements and 400+ PLC communication protocols for essential needs of industrial automation.

Standard

enhanced for smart applications

In addition to all the features on cMT X Basic, cMT X Standard also features enhancements in multimedia and mobile monitoring to meet the needs for a range of applications.

Advanced

all-around smart HMI

Supporting everything cMT X Basic and Standard have, cMT X Advanced also excels in cross-platform integration given its IIoT protocol capabilities.

Headless HMI

going beyond size boundaries

Headless HMI works independently without a screen and can be monitored on apps or on external screens of various sizes.



cMT X Series Model Types

cMT X Series is offered in multiple levels to address different requirements

● Naming Convention ●

cMT 3 07 2 X *

Series Name
cMT X

Category

- 1 Basic
- 2 Standard
- 3 Advanced

Screen Size

| | | | |
|----|-------|----|-------|
| 07 | 7" | 12 | 12.1" |
| 09 | 9.7" | 15 | 15" |
| 10 | 10.1" | 16 | 15.6" |

Ethernet Port

- 2 Dual Ethernet Ports
- 6 Single Ethernet Port
- 8 Dual Ethernet Ports

Others

- H High Resolution
- T Wide Temperature
- P Projected Capacitive Touch (PCAP)



Advanced Model

Specifications



| Model | | cMT3072X2 | cMT3072XH2 | cMT3072XHT | cMT3092X |
|---------------|----------------------------------|---|---|---|---|
| Display | Display | 7" TFT | 7" WVA | 7" WVA | 9.7" TFT |
| | Resolution | 800 x 480 | 1024 x 600 | 1024 x 600 | 1024 x 768 |
| | Brightness (cd/ m ²) | 400 | 450 | 450 | 350 |
| | Contrast Ratio | 800: 1 | 800: 1 | 800: 1 | 500:1 |
| | Backlight Type | LED | LED | LED | LED |
| | Backlight Life Time | > 30,000 hrs. | > 30,000 hrs. | > 30,000 hrs. | > 30,000 hrs. |
| | Colors | 16.7M | 16.7M | 16.7M | 262K |
| | LCD Viewing Angle (T/B/L/R) | 80/60/80/80 | 85/85/85/85 | 85/85/85/85 | 60/70/70/70 |
| | Pixel Pitch (mm) | 0.1926(H) x 0.179(V) | 0.1506(H) x 0.1432(V) | 0.1506(H) x 0.1432(V) | 0.192(H) x 0.192(V) |
| Touch Panel | Type | 4-wire Resistive Type | 4-wire Resistive Type | 4-wire Resistive Type | 4-wire Resistive Type |
| | Accuracy | Active Area Length(X)±2%, Width(Y)±2% | Active Area Length(X)±2%, Width(Y)±2% | Active Area Length(X)±2%, Width(Y)±2% | Active Area Length(X)±2%, Width(Y)±2% |
| Memory | Flash | 4 GB | 4 GB | 4 GB | 4 GB |
| | RAM | 1 GB | 1 GB | 1 GB | 1 GB |
| Processor | | Quad-core RISC | Quad-core RISC | Quad-core RISC | Quad-core RISC |
| I/O Port | USB Host | USB 2.0 x 1 | USB 2.0 x 1 | USB 2.0 x 1 | USB 2.0 x 1 |
| | Ethernet | LAN 1: 10/100 Base-T x 1 LAN 2: 10/100 Base-T x 1 | LAN 1: 10/100 Base-T x 1 LAN 2: 10/100 Base-T x 1 | LAN 1: 10/100 Base-T x 1 LAN 2: 10/100 Base-T x 1 | LAN 1: 10/100/1000 Base-T x 1 LAN 2: 10/100 Base-T x 1 |
| | COM Port | Con.A: COM2 RS-485 2W/4W, COM3 RS-485 2W, CAN Bus Con.B: COM1 RS-232 4W, COM3 RS-232 2W* | Con.A: COM2 RS-485 2W/4W, COM3 RS-485 2W, CAN Bus Con.B: COM1 RS-232 4W, COM3 RS-232 2W* | Con.A: COM2 RS-485 2W/4W, COM3 RS-485 2W, CAN Bus Con.B: COM1 RS-232 4W, COM3 RS-232 2W* | Con.A: COM2 RS-485 2W/4W, COM3 RS-485 2W, CAN Bus Con.B: COM1 RS-232 4W, COM3 RS-232 2W* |
| | CAN Bus | Yes | Yes | Yes | Yes |
| | Audio Output | N/A | N/A | N/A | Built-in Mono Speaker |
| RTC | | Built-in | Built-in | Built-in | Built-in |
| Power | Input Power | 24±20%VDC | 24±20%VDC | 24±20%VDC | 24±20%VDC |
| | Power Isolation | Built-in | Built-in | Built-in | Built-in |
| | Power Consumption | 820mA@24VDC | 820mA@24VDC | 820mA@24VDC | 1A@24VDC |
| | Voltage Resistance | 500VAC (1 min.) | 500VAC (1 min.) | 500VAC (1 min.) | 500VAC (1 min.) |
| | Isolation Resistance | Exceed 50MΩ @ 500VDC | Exceed 50MΩ @ 500VDC | Exceed 50MΩ @ 500VDC | Exceed 50MΩ @ 500VDC |
| Specification | PCB Coating | Yes | Yes | Yes | Yes |
| | Enclosure | Plastic | Plastic | Aluminum | Plastic |
| | Dimensions WxHxD | 200.3 x 146.3 x 35.0 mm | 200.3 x 146.3 x 35.0 mm | 200.4 x 146.5 x 36.0 mm | 260.6 x 203.1 x 44.5 mm |
| | Panel Cutout | 192 x 138 mm | 192 x 138 mm | 192 x 138 mm | 250 x 192 mm |
| | Weight | Approx. 0.6 kg | Approx. 0.6 kg | Approx. 0.8 kg | Approx. 1 kg |
| | Mount | Panel mount | Panel mount | Panel mount | Panel mount, VESA mount 75 x 75 mm |
| Environment | Protection Structure | UL Type 4X (indoor use only) / NEMA4 / IP66 Compliant Front Panel | UL Type 4X (indoor use only) / NEMA4 / IP66 Compliant Front Panel | UL Type 4X (indoor use only) / NEMA4 / IP66 Compliant Front Panel | UL Type 4X (indoor use only) / NEMA4 / IP66 Compliant Front Panel |
| | Storage Temperature | -20° ~ 60° C (-4° ~ 140° F) | -20° ~ 60° C (-4° ~ 140° F) | -20° ~ 60° C (-4° ~ 140° F) | -20° ~ 60° C (-4° ~ 140° F) |
| | Operating Temperature | 0° ~ 55° C (32° ~ 131° F) | 0° ~ 55° C (32° ~ 131° F) | -20° ~ 55° C (-4° ~ 131° F) | 0° ~ 50° C (32° ~ 122° F) |
| | Relative Humidity | 10% ~ 90% (non-condensing) | 10% ~ 90% (non-condensing) | 10% ~ 90% (non-condensing) | 10% ~ 90% (non-condensing) |
| | Vibration Endurance | 10 to 25Hz (X, Y, Z direction 2G 30 minutes) | 10 to 25Hz (X, Y, Z direction 2G 30 minutes) | 10 to 25Hz (X, Y, Z direction 2G 30 minutes) | 10 to 25Hz (X, Y, Z direction 2G 30 minutes) |
| Certificate | CE | CE marked | CE marked | CE marked | CE marked |
| | UL | cULus Listed | cULus Listed | cULus Listed | cULus Listed |
| Software | Weincloud | EasyAccess 2.0 (Optional) Dashboard (Optional) | EasyAccess 2.0 (Optional) Dashboard (Optional) | EasyAccess 2.0 (Optional) Dashboard (Optional) | EasyAccess 2.0 (Optional) Dashboard (Optional) |
| | CODESYS | Optional | Optional | Optional | Optional |

*Only Tx & Rx (no RTS/CTS) may be used for COM1 RS-232 when COM3 RS-232 is also used.

Advanced Model

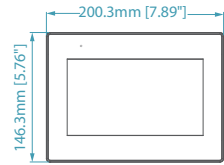
Dimensions

cMT3072X2

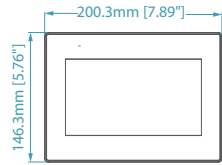
cMT3072XH2

cMT3072XHT

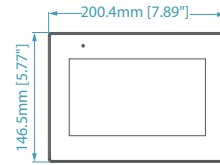
cMT3092X



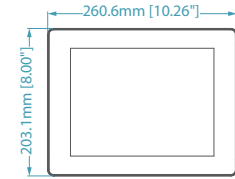
Front View



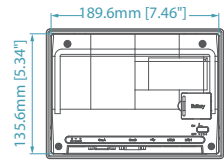
Front View



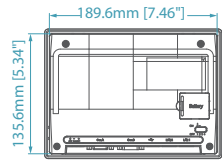
Front View



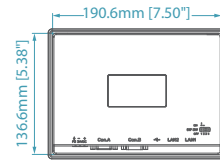
Front View



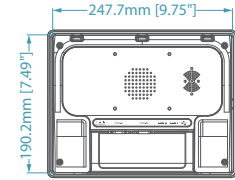
Rear View



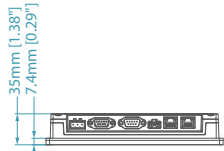
Rear View



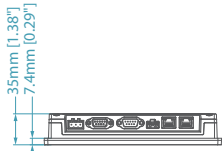
Rear View



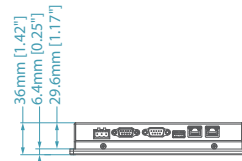
Rear View



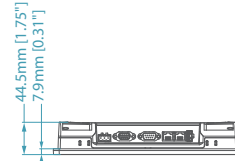
Bottom View



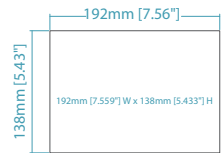
Bottom View



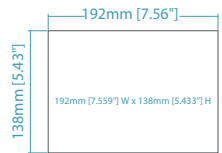
Bottom View



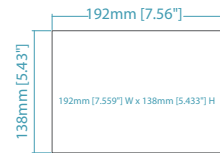
Bottom View



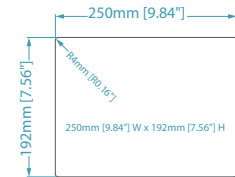
Cutout Dimensions



Cutout Dimensions



Cutout Dimensions



Cutout Dimensions

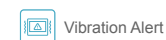
Advanced Model

Specifications



| Model | | cMT3108XH | cMT3108XP | cMT3102X | cMT3152X | cMT3162X | |
|---------------|----------------------------------|---|--|---|---|--|--|
| Display | Display | 10.1" WVA | 10.1" WVA | 10.1" TFT | 15" WVA | 15.6" WVA | |
| | Resolution | 1280 x 800 | 1280 x 800 | 1024 x 600 | 1024 x 768 | 1920 x 1080 | |
| | Brightness (cd/ m ²) | 500 | 425 | 350 | 350 | 300 | |
| | Contrast Ratio | 800:1 | 800:1 | 500:1 | 2500: 1 | 800: 1 | |
| | Backlight Type | LED | LED | LED | LED | LED | |
| | Backlight Life Time | >50,000 hrs. | >50,000 hrs. | >50,000 hrs. | >70,000 hrs. | >30,000 hrs. | |
| | Colors | 16.7M | 16.7M | 16.7M | 16.2M | 16.2M | |
| | LCD Viewing Angle (T/B/L/R) | 89/89/89/89 | 89/89/89/89 | 70/70/80/80 | 88/88/88/88 | 89/89/89/89 | |
| | Pixel Pitch (mm) | 0.1695 (H) x 0.1695 (V) | 0.1695 (H) x 0.1695 (V) | 0.2175 (H) x 0.2088 (V) | 0.297(H) x 0.297(V) | 0.17925(H) x 0.17925(V) | |
| | Touch Panel | Type | 4-wire Resistive Type | Tempered Glass, Capacitive Type Hardness Scale 7H | 4-wire Resistive Type | Tempered Glass, Capacitive Type Hardness Scale 7H | Tempered Glass, Capacitive Type Hardness Scale 7H |
| Accuracy | | Active Area Length(X)±2%, Width(Y)±2% | N/A | Active Area Length(X)±2%, Width(Y)±2% | N/A | N/A | |
| Memory | Flash | 4 GB | 4 GB | 4 GB | 4 GB | 4 GB | |
| | RAM | 1 GB | 1 GB | 1 GB | 1 GB | 1 GB | |
| Processor | | Quad-core RISC | Quad-core RISC | Quad-core RISC | Quad-core RISC | Quad-core RISC | |
| I/O Port | SD Card Slot | N/A | N/A | N/A | SD/SDHC | N/A | |
| | USB Host | USB 2.0 x 1 | USB 2.0 x 1 | USB 2.0 x 1 | USB 2.0 x 1 | USB 2.0 x 1 | |
| | Ethernet | LAN 1: 10/100/1000 Base-T x 1 | LAN 1: 10/100/1000 Base-T x 1 | LAN 1: 10/100/1000 Base-T x 1 | LAN 1: 10/100/1000 Base-T x 1 | LAN 1: 10/100/1000 Base-T x 1 | LAN 1: 10/100/1000 Base-T x 1 |
| | | LAN 2: 10/100 Base-T x 1 | LAN 2: 10/100 Base-T x 1 | LAN 2: 10/100 Base-T x 1 | LAN 2: 10/100 Base-T x 1 | LAN 2: 10/100 Base-T x 1 | LAN 2: 10/100 Base-T x 1 |
| | WiFi | M02 WiFi Expansion Module (Optional) | M02 WiFi Expansion Module (Optional) | M02 WiFi Expansion Module (Optional) | N/A | N/A | |
| | COM Port | Con.A: COM2 RS-485 2W/4W, COM3 RS-485 2W, CAN Bus | Con.A: COM2 RS-485 2W/4W, COM3 RS-485 2W, CAN Bus | Con.A: COM2 RS-485 2W/4W, COM3 RS-485 2W, CAN Bus | Con.A: COM1 RS-485 2W/4W, COM3 RS-485 2W, CAN Bus | Con.A: COM1 RS-485 2W/4W, COM3 RS-485 2W, CAN Bus | Con.A: COM1 RS-485 2W/4W, COM3 RS-485 2W, CAN Bus |
| | | Con.B: COM1 RS-232 4W, COM3 RS-232 2W* | Con.B: COM1 RS-232 4W, COM3 RS-232 2W* | Con.B: COM1 RS-232 4W, COM3 RS-232 2W* | Con.B: COM1 RS-232 4W, COM3 RS-232 2W* | Con.B: COM1 RS-232 4W, COM3 RS-232 2W* | Con.B: COM1 RS-232 4W, COM3 RS-232 2W* |
| | | RS-485 Dual Isolation | N/A | N/A | N/A | Yes | N/A |
| | CAN Bus | Yes | Yes | Yes | Yes | Yes | |
| | Audio Output | Built-in Mono Speaker | Built-in Mono Speaker | N/A | Built-in Mono Speaker Audio Line Out - 3.5 mm jack x 1 | Built-in Mono Speaker | |
| RTC | | Built-in | Built-in | Built-in | Built-in | | |
| Power | Input Power | 24±20%VDC | 24±20%VDC | 24±20%VDC | 24±20%VDC | 24±20%VDC | |
| | Power Isolation | Built-in | Built-in | Built-in | Built-in | Built-in | |
| | Power Consumption | 700mA@24VDC | 700mA@24VDC | 1A@24VDC | 1.3A@24VDC | 1.3A@24VDC | |
| | Voltage Resistance | 500VAC (1 min.) | 500VAC (1 min.) | 500VAC (1 min.) | 500VAC (1 min.) | 500VAC (1 min.) | |
| | Isolation Resistance | Exceed 50MΩ @ 500VDC | Exceed 50MΩ @ 500VDC | Exceed 50MΩ @ 500VDC | Exceed 50MΩ @ 500VDC | Exceed 50MΩ @ 500VDC | |
| Specification | PCB Coating | Yes | Yes | Yes | Yes | Yes | |
| | Enclosure | Plastic | Plastic | Plastic | Front bezel: Plastic, Rear Enclosure: Aluminum | Front bezel: Plastic, Rear Enclosure: Aluminum | |
| | Dimensions WxHxD | 266 x 196 x 40 mm | 266 x 196 x 42.7 mm | 271 x 213 x 38 mm | 366 x 293 x 51.5 mm | 400 x 263 x 27.6 mm | |
| | Panel Cutout | 255 x 185 mm | 255 x 185 mm | 260 x 202 mm | 352 x 279 mm | 384 x 247 mm | |
| | Weight | Approx. 1.1 kg | Approx. 1.1 kg | Approx. 1.2 kg | Approx. 2.85 kg | Approx. 1.6 kg | |
| | Mount | Panel mount, VESA mount 75 x 75 mm | Panel mount, VESA mount 75 x 75 mm | Panel mount, VESA mount 75 x 75 mm | Panel mount, VESA mount 75 x 75 mm | Panel mount, VESA mount 100 x 100 mm | |
| Environment | Protection Structure | UL Type 4X (indoor use only) / NEMA4 / IP66 Compliant Front Panel | NEMA4 / IP66 Compliant Front Panel | UL Type 4X (indoor use only) / NEMA4 / IP66 Compliant Front Panel | NEMA4 / IP66 Compliant Front Panel | NEMA4 / IP66 Compliant Front Panel | |
| | Storage Temperature | -20° ~ 60° C (-4° ~ 140° F) | -20° ~ 60° C (-4° ~ 140° F) | -20° ~ 60° C (-4° ~ 140° F) | -20° ~ 60° C (-4° ~ 140° F) | -20° ~ 60° C (-4° ~ 140° F) | |
| | Operating Temperature | 0° ~ 55° C (32° ~ 131° F) | 0° ~ 55° C (32° ~ 131° F) | 0° ~ 50° C (32° ~ 122° F) | 0° ~ 50° C (32° ~ 122° F) | 0° ~ 50° C (32° ~ 122° F) | |
| | Relative Humidity | 10% ~ 90% (non-condensing) | 10% ~ 90% (non-condensing) | 10% ~ 90% (non-condensing) | 10% ~ 90% (non-condensing) | 10% ~ 90% (non-condensing) | |
| | Vibration Endurance | 10 to 25Hz (X, Y, Z direction 2G 30 minutes) | 10 to 25Hz (X, Y, Z direction 2G 30 minutes) | 10 to 25Hz (X, Y, Z direction 2G 30 minutes) | 10 to 25Hz (X, Y, Z direction 2G 30 minutes) | 10 to 25Hz (X, Y, Z direction 2G 30 minutes) | |
| Certificate | CE | CE marked | CE marked | CE marked | CE marked | CE marked | |
| | UL | cULus Listed | cULus Listed | cULus Listed | cULus Listed | cULus Listed | |
| | ATEX | ATEX Zone 2/22 Category 3 G/D | ATEX Zone 2/22 Category 3 G/D | ATEX Zone 2/22 Category 3 G/D | N/A | N/A | |
| Software | Weincloud | EasyAccess 2.0 (Optional) Dashboard (Optional) | EasyAccess 2.0 (Optional) Dashboard (Optional) | EasyAccess 2.0 (Optional) Dashboard (Optional) | EasyAccess 2.0 (Optional) Dashboard (Optional) | EasyAccess 2.0 (Optional) Dashboard (Optional) | |
| | CODESYS | Optional | Optional | Optional | Optional | Optional | |

*Only Tx & Rx (no RTS/CTS) may be used for COM1 RS-232 when COM3 RS-232 is also used.



Vibration Alert



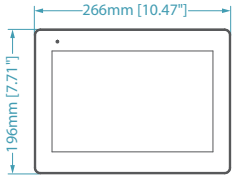
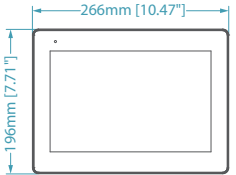
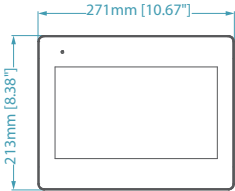
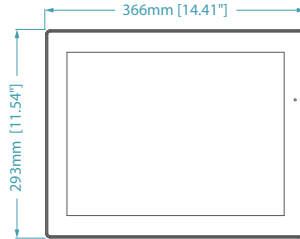
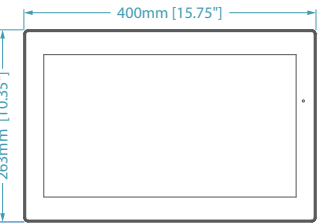
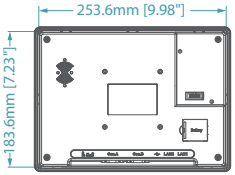
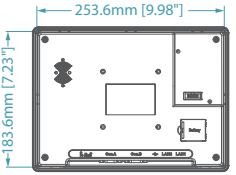
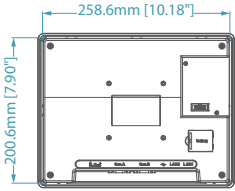
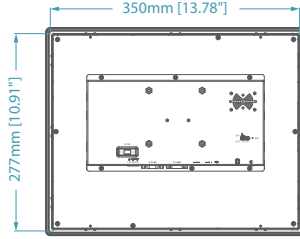
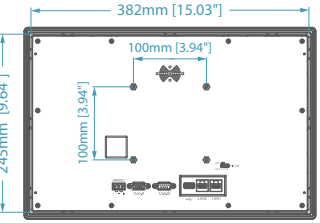
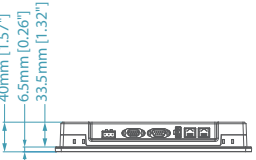
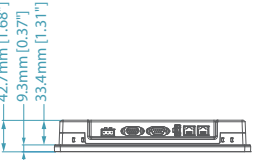
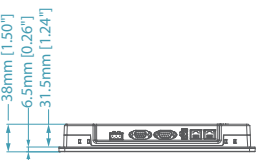
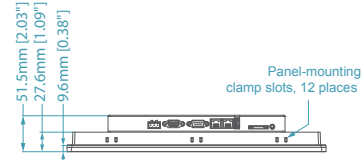
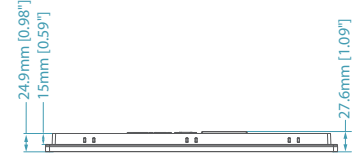
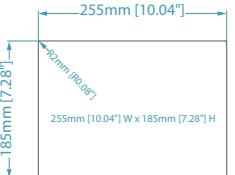
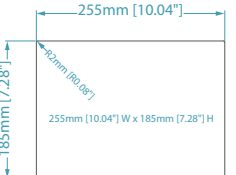
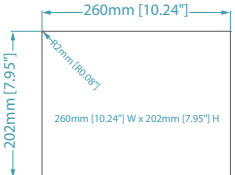
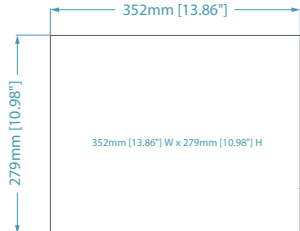
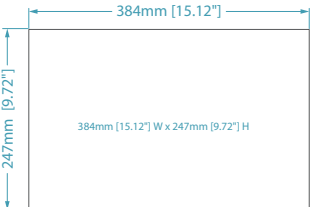
Capacitive Type



Wide viewing angle

Advanced Model

Dimensions

| cMT3108XH | cMT3108XP | cMT3102X | cMT3152X | cMT3162X |
|--|--|---|---|--|
|  <p>266mm [10.47"] 196mm [7.71"]</p> <p>Front View</p> |  <p>266mm [10.47"] 196mm [7.71"]</p> <p>Front View</p> |  <p>271mm [10.67"] 213mm [8.38"]</p> <p>Front View</p> |  <p>366mm [14.41"] 293mm [11.54"]</p> <p>Front View</p> |  <p>400mm [15.75"] 263mm [10.35"]</p> <p>Front View</p> |
|  <p>253.6mm [9.98"] 183.6mm [7.23"]</p> <p>Rear View</p> |  <p>253.6mm [9.98"] 183.6mm [7.23"]</p> <p>Rear View</p> |  <p>258.6mm [10.18"] 200.6mm [7.90"]</p> <p>Rear View</p> |  <p>350mm [13.78"] 277mm [10.91"]</p> <p>Rear View</p> |  <p>382mm [15.03"] 245mm [9.64"] 100mm [3.94"]</p> <p>Rear View</p> |
|  <p>40mm [1.57"] 6.5mm [0.26"] 33.5mm [1.32"]</p> <p>Bottom View</p> |  <p>42.7mm [1.68"] 9.3mm [0.37"] 33.4mm [1.31"]</p> <p>Bottom View</p> |  <p>38mm [1.50"] 6.5mm [0.26"] 31.5mm [1.24"]</p> <p>Bottom View</p> |  <p>51.5mm [2.03"] 27.6mm [1.09"] 9.6mm [0.38"]</p> <p>Panel-mounting clamp slots, 12 places</p> <p>Bottom View</p> |  <p>24.9mm [0.98"] 15mm [0.59"] 27.6mm [1.09"]</p> <p>Bottom View</p> |
|  <p>255mm [10.04"] 185mm [7.28"] 40mm (R0.08")</p> <p>255mm [10.04"] W x 185mm [7.28"] H</p> <p>Cutout Dimensions</p> |  <p>255mm [10.04"] 185mm [7.28"] 40mm (R0.08")</p> <p>255mm [10.04"] W x 185mm [7.28"] H</p> <p>Cutout Dimensions</p> |  <p>260mm [10.24"] 202mm [7.95"] 40mm (R0.08")</p> <p>260mm [10.24"] W x 202mm [7.95"] H</p> <p>Cutout Dimensions</p> |  <p>352mm [13.86"] 279mm [10.98"]</p> <p>352mm [13.86"] W x 279mm [10.98"] H</p> <p>Cutout Dimensions</p> |  <p>384mm [15.12"] 247mm [9.72"]</p> <p>384mm [15.12"] W x 247mm [9.72"] H</p> <p>Cutout Dimensions</p> |

Standard Model

Specifications



| Model | | cMT2078X | cMT2108X2 | cMT2128X | cMT2158X | cMT2166X | |
|-----------------------|---|--|--|---|--|--|------------------------------------|
| Display | Display | 7" TFT | 10.1" TFT | 12.1" WVA | 15" WVA | 15.6" WVA | |
| | Resolution | 800 x 480 | 1024 x 600 | 1024 x 768 | 1024 x 768 | 1920 x 1080 | |
| | Brightness (cd/ m ²) | 400 | 350 | 500 | 350 | 300 | |
| | Contrast Ratio | 800: 1 | 500:1 | 1000:1 | 2500: 1 | 800: 1 | |
| | Backlight Type | LED | LED | LED | LED | LED | |
| | Backlight Life Time | > 30,000 hrs. | > 50,000 hrs. | > 30,000 hrs. | > 70,000 hrs. | > 30,000 hrs. | |
| | Colors | 16.7M | 16.7M | 16.7M | 16.2M | 16.2M | |
| | LCD Viewing Angle (T/B/L/R) | 80/60/80/80 | 70/70/80/80 | 89/89/89/89 | 88/88/88/88 | 89/89/89/89 | |
| | Pixel Pitch (mm) | 0.1926(H) x 0.179(V) | 0.2175 (H) x 0.2088 (V) | 0.240 (H) x 0.240 (V) | 0.297(H) x 0.297(V) | 0.17925(H) x 0.17925(V) | |
| Touch Panel | Type | 4-wire Resistive Type | 4-wire Resistive Type | 4-wire Resistive Type | 4-wire Resistive Type | Tempered Glass, Capacitive Type | |
| | Accuracy | Active Area Length(X)±2%, Width(Y)±2% | Active Area Length(X)±2%, Width(Y)±2% | Active Area Length(X)±2%, Width(Y)±2% | Active Area Length(X)±2%, Width(Y)±2% | N/A | |
| Memory | Flash | 4 GB | 4 GB | 4 GB | 4 GB | 4 GB | |
| | RAM | 1 GB | 1 GB | 1 GB | 1 GB | 1 GB | |
| Processor | | Quad-core RISC | Quad-core RISC | Quad-core RISC | Quad-core RISC | Quad-core RISC | |
| I/O Port | SD Card Slot | N/A | N/A | Micro SD x 1 | SD/SDHC | N/A | |
| | USB Host | USB 2.0 x 1 | USB 2.0 x 1 | USB 2.0 x 1 | USB 2.0 x 1 | USB 2.0 x 1 | |
| | Ethernet | LAN 1: 10/100 Base-T x 1 | LAN 1: 10/100/1000 Base-T x 1 | LAN 1: 10/100/1000 Base-T x 1 | LAN 1: 10/100/1000 Base-T x 1 | LAN 1: 10/100/1000 Base-T x 1 | 10/100 Base-T x 1 |
| | | LAN 2: 10/100 Base-T x 1 | LAN 2: 10/100 Base-T x 1 | LAN 2: 10/100 Base-T x 1 | LAN 2: 10/100 Base-T x 1 | LAN 2: 10/100 Base-T x 1 | |
| | WiFi | N/A | M02 WiFi Expansion Module (Optional) | N/A | N/A | N/A | |
| | COM Port | Con.A: COM2 RS-485 2W/4W, COM3 RS-485 2W Con.B: COM1 RS-232 4W, COM3 RS-232 2W* | Con.A: COM2 RS-485 2W/4W, COM3 RS-485 2W Con.B: COM1 RS-232 4W, COM3 RS-232 2W* | Con.A:COM2 RS-485 2W/4W, COM3 RS-485 2W Con.B: COM1 RS-232 4W, COM3 RS-232 2W* | Con.A: COM1 RS-485 2W/4W, COM3 RS-485 2W Con.B: COM1 RS-232 4W, COM3 RS-232 2W* | Con.A: COM1 RS-485 2W/4W, COM3 RS-485 2W Con.B: COM1 RS-232 4W, COM3 RS-232 2W* | |
| RS-485 Dual Isolation | N/A | N/A | Yes | N/A | N/A | | |
| Audio Output | N/A | N/A | N/A | Built-in Mono Speaker Audio Line Out - 3.5 mm jack x 1 | Built-in Mono Speaker | | |
| RTC | | Built-in | Built-in | Built-in | Built-in | Built-in | |
| Power | Input Power | 24±20%VDC | 24±20%VDC | 24±20%VDC | 24±20%VDC | 24±20%VDC | |
| | Power Isolation | Built-in | Built-in | Built-in | Built-in | Built-in | |
| | Power Consumption | 820mA@24VDC | 1A@24VDC | 1.2A@24VDC | 1.3A@24VDC | 0.9A@24VDC | |
| | Voltage Resistance | 500VAC (1 min.) | 500VAC (1 min.) | 500VAC (1 min.) | 500VAC (1 min.) | 500VAC (1 min.) | |
| | Isolation Resistance | Exceed 50MΩ @ 500VDC | Exceed 50MΩ @ 500VDC | Exceed 50MΩ @ 500VDC | Exceed 50MΩ @ 500VDC | Exceed 50MΩ @ 500VDC | |
| Specification | PCB Coating | Yes | Yes | Yes | Yes | Yes | |
| | Enclosure | Plastic | Plastic | Plastic | Aluminum | Front bezel: Plastic, Rear Enclosure: Aluminum | |
| | Dimensions WxHxD | 200.3 x 146.3 x 35.0 mm | 271 x 213 x 38 mm | 317 x 243 x 41 mm | 366 x 293 x 48.2mm | 400 x 263 x 27.6 mm | |
| | Panel Cutout | 192 x 138 mm | 260 x 202 mm | 305 x 231 mm | 352 x 279 mm | 384 x 247 mm | |
| | Weight | Approx. 0.6 kg | Approx. 1.2 kg | Approx. 1.7 kg | Approx. 2.74 kg | Approx. 1.6 kg | |
| | Mount | Panel mount | Panel mount, VESA mount 75 x 75 mm | Panel mount, VESA mount 75 x 75 mm | Panel mount, VESA mount 75 x 75 mm | Panel mount, VESA mount 100 x 100 mm | |
| | Environment | Protection Structure | UL Type 4X (indoor use only) / NEMA4 / IP66 Compliant Front Panel | UL Type 4X (indoor use only) / NEMA4 / IP66 Compliant Front Panel | NEMA4 / IP66 Compliant Front Panel | UL Type 4X (indoor use only) / NEMA4 / IP66 Compliant Front Panel | NEMA4 / IP66 Compliant Front Panel |
| Storage Temperature | -20° ~ 60° C (-4° ~ 140° F) | -20° ~ 60° C (-4° ~ 140° F) | -20° ~ 60° C (-4° ~ 140° F) | -20° ~ 60° C (-4° ~ 140° F) | -20° ~ 60° C (-4° ~ 140° F) | | |
| Operating Temperature | 0° ~ 55° C (32° ~ 131° F) | 0° ~ 50° C (32° ~ 122° F) | 0° ~ 55° C (32° ~ 131° F) | 0° ~ 50° C (32° ~ 122° F) | 0° ~ 50° C (32° ~ 122° F) | | |
| Relative Humidity | 10% ~ 90% (non-condensing) | 10% ~ 90% (non-condensing) | 10% ~ 90% (non-condensing) | 10% ~ 90% (non-condensing) | 10% ~ 90% (non-condensing) | | |
| Vibration Endurance | 10 to 25Hz (X, Y, Z direction 2G 30 minutes) | 10 to 25Hz (X, Y, Z direction 2G 30 minutes) | 10 to 25Hz (X, Y, Z direction 2G 30 minutes) | 10 to 25Hz (X, Y, Z direction 2G 30 minutes) | 10 to 25Hz (X, Y, Z direction 2G 30 minutes) | | |
| Certificate | CE | CE marked | CE marked | CE marked | CE marked | CE marked | |
| | UL | cULus Listed | cULus Listed | cULus Listed | cULus Listed | cULus Listed | |
| Software | Weincloud | EasyAccess 2.0 (Optional) Dashboard (Optional) | EasyAccess 2.0 (Optional) Dashboard (Optional) | EasyAccess 2.0 (Optional) Dashboard (Optional) | EasyAccess 2.0 (Optional) Dashboard (Optional) | EasyAccess 2.0 (Optional) Dashboard (Optional) | |
| | CODESYS | Optional | Optional | Optional | Optional | N/A | |

*Only Tx & Rx (no RTS/CTS) may be used for COM1 RS-232 when COM3 RS-232 is also used.

*The cMT2108X2 (V2) / cMT2158X (V2) product label indicates MPI support, while the original cMT2108X2 / cMT2158X label does not.



Capacitive Type

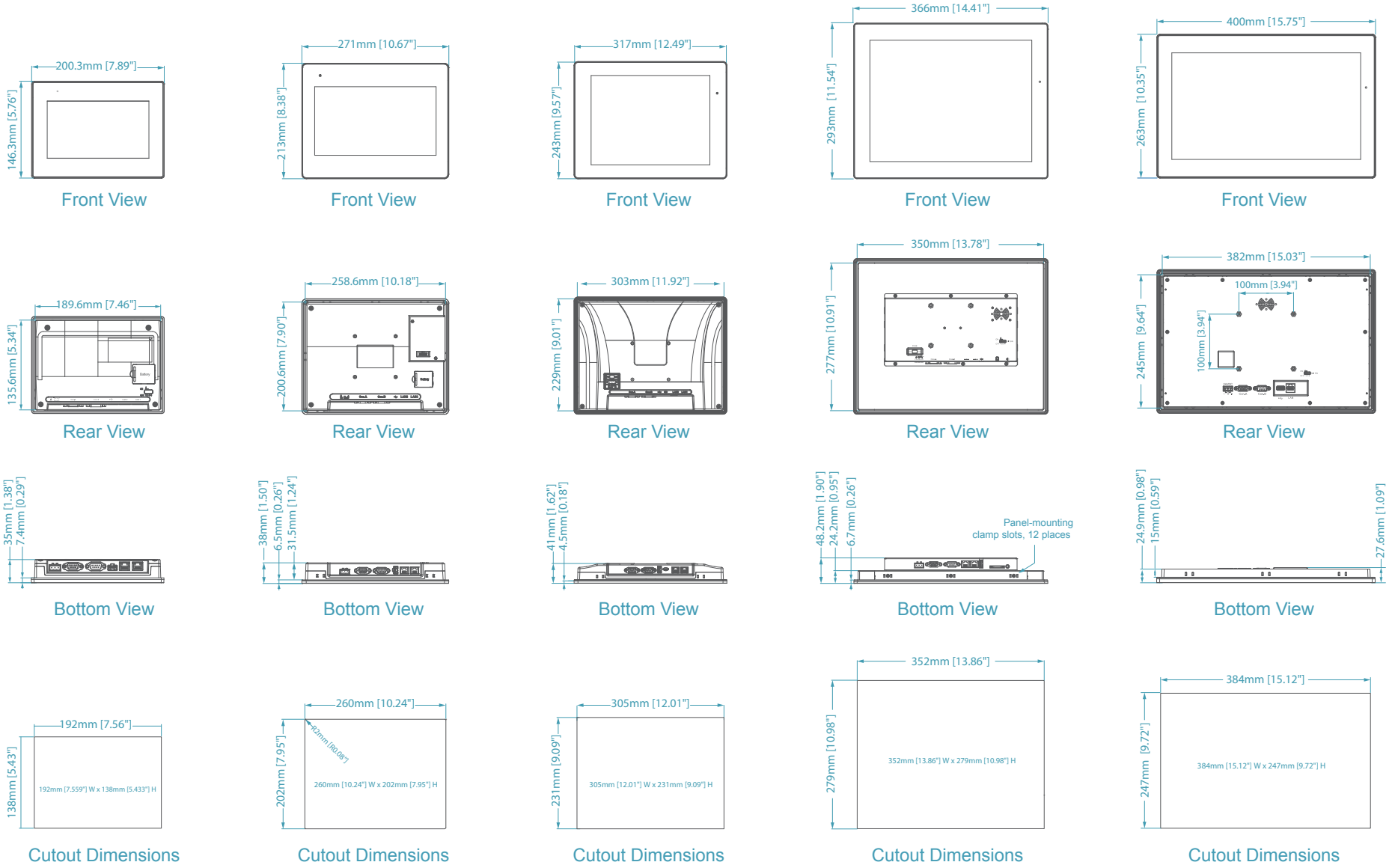


Wide viewing angle

Standard Model

Dimensions

| cMT2078X | cMT2108X2 | cMT2128X | cMT2158X | cMT2166X |
|----------|-----------|----------|----------|----------|
|----------|-----------|----------|----------|----------|



Basic Model

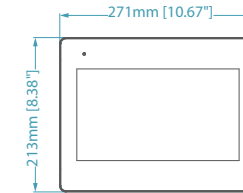
Specifications & Dimensions



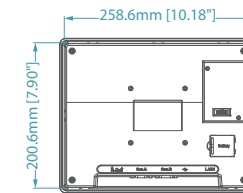
| Model | | cMT1106X |
|---------------|-----------------------------|--|
| Display | Display | 10.1" TFT |
| | Resolution | 1024 x 600 |
| | Brightness (cd/ m') | 350 |
| | Contrast Ratio | 500:1 |
| | Backlight Type | LED |
| | Backlight Life Time | > 50,000 hrs. |
| | Colors | 16.7M |
| | LCD Viewing Angle (T/B/L/R) | 70/70/80/80 |
| | Pixel Pitch (mm) | 0.2175 (H) x 0.2088 (V) |
| | Touch Panel | Type |
| Accuracy | | Active Area Length(X)±2%, Width(Y)±2% |
| Memory | Flash | 4 GB |
| | RAM | 1 GB |
| Processor | | Quad-core RISC |
| I/O Port | USB Host | USB 2.0 x 1 |
| | Ethernet | 10/100 Base-T x 1 |
| | WiFi | M02 WiFi Expansion Module (Optional) |
| | COM Port | Con.A: COM2 RS-485 2W/4W, COM3 RS-485 2W Con.B: COM1 RS-232 4W, COM3 RS-232 2W* |
| RTC | | Built-in |
| Power | Input Power | 24±20%VDC |
| | Power Isolation | Built-in |
| | Power Consumption | 720mA@24VDC |
| | Voltage Resistance | 500VAC (1 min.) |
| | Isolation Resistance | Exceed 50MΩ @ 500VDC |
| Specification | PCB Coating | Yes |
| | Enclosure | Plastic |
| | Dimensions WxHxD | 271 x 213 x 38 mm |
| | Panel Cutout | 260 x 202 mm |
| | Weight | Approx. 1.2 kg |
| | Mount | Panel mount, VESA mount 75 x 75 mm |
| Environment | Protection Structure | NEMA4 / IP66 Compliant Front Panel |
| | Storage Temperature | -20° ~ 60° C (-4° ~ 140° F) |
| | Operating Temperature | 0° ~ 50° C (32° ~ 122° F) |
| | Relative Humidity | 10% ~ 90% (non-condensing) |
| | Vibration Endurance | 10 to 25Hz (X, Y, Z direction 2G 30 minutes) |
| Certificate | CE | CE marked |
| Software | Weincloud | EasyAccess 2.0 (Optional) Dashboard (Optional) |
| | CODESYS | N/A |

*Only Tx & Rx (no RTS/CTS) may be used for COM1 RS-232 when COM3 RS-232 is also used.

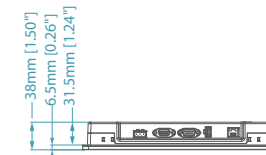
cMT1106X



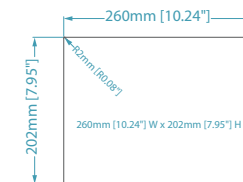
Front View



Rear View



Bottom View



Cutout Dimensions

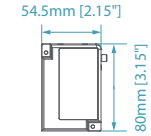
Accessories

Specifications & Dimensions

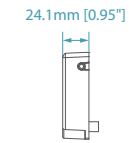


| Model | | M02 |
|---------------|-----------------------|---|
| Network | WiFi | IEEE 802.11 b/g/n 802.11b: max 19.76 dBm 802.11g: max 19.93 dBm 802.11n: max 19.99 dBm |
| I/O Port | SMA Female Connector | 1 |
| | Male Connector to HMI | 1 |
| Power | Input Power | 5VDC |
| | Power Consumption | 900mA@5VDC (powered by HMI) |
| | Voltage Resistance | 500VAC (1min.) |
| | Isolation Resistance | Exceed 50MΩ @ 500VDC |
| Specification | PCB Coating | N/A |
| | Enclosure | Plastic |
| | Dimensions WxHxD | 54.5 x 80 x 24.1 mm |
| | Weight | Approx. 80 g |
| | Mount | HMI connector + diagonal screw fastening |
| | Environment | Protection Structure |
| | Storage Temperature | -20° ~ 60° C (-4° ~ 140° F) |
| | Operating Temperature | 0° ~ 55° C (32° ~ 131° F) |
| | Relative Humidity | 10% ~ 90% (non-condensing) |
| | Vibration Endurance | 10 to 25Hz (X, Y, Z direction 2G 30 minutes) |
| Certificate | CE | CE marked |
| | UL | cULus Listed |

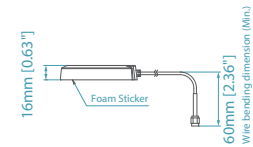
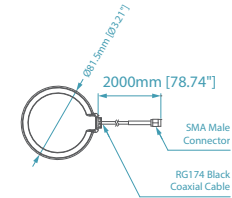
M02



Front View



Side View



Antenna

Headless HMI

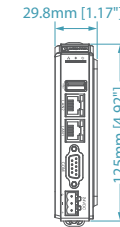
Specifications & Dimensions



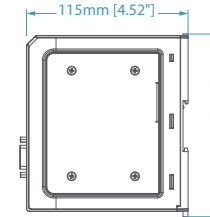
| Model | | cMT-FHDX-820 | cMT-SVRX-820 / 822 | |
|---|---|--|--|-------------------------------|
| Memory | Flash | 4 GB | 4 GB | |
| | RAM | 1 GB | 1 GB | |
| Processor | | Quad-core RISC | Quad-core RISC | |
| I/O Port | SD Card Slot | N/A | Micro SD x1 | |
| | USB Host | USB 2.0 x 1 | USB 2.0 x 1 | |
| | Ethernet | LAN 1: 10/100/1000 Base-T x 1 | LAN 1: 10/100/1000 Base-T x 1 | LAN 1: 10/100/1000 Base-T x 1 |
| | | LAN 2: 10/100 Base-T x 1 | LAN 2: 10/100 Base-T x 1 | LAN 2: 10/100 Base-T x 1 |
| | COM Port | COM1: RS-232 2W COM2: RS-485 2W/4W COM3: RS-485 2W | COM1: RS-232 2W COM2: RS-485 2W/4W COM3: RS-485 2W | |
| HDMI | Customizable (max. resolution 1920 x 1080) | N/A | | |
| Recommended Resolutions (Please use these recommended screen resolutions to avoid compatibility issues.) | | 720x480 / 720x576 / 800x600 1024x768 / 1280x720 1366x768 / 1920x1080 | N/A | |
| Audio Output | | HDMI Audio Output | N/A | |
| RTC | | Built-in | Built-in | |
| Power | Input Power | 24±20%VDC | 24±20%VDC | |
| | Power Isolation | Built-in | Built-in | |
| | Power Consumption | 850mA@24VDC | 850mA@24VDC | |
| | Voltage Resistance | 500VAC (1 min.) | 500VAC (1 min.) | |
| | Isolation Resistance | Exceed 50MΩ @ 500VDC | Exceed 50MΩ @ 500VDC | |
| Specification | PCB Coating | Yes | Yes | |
| | Enclosure | Plastic | Plastic | |
| | Dimensions WxHxD | 29.8 x 130 x 115 mm | 29.8 x 130 x 115 mm | |
| | Weight | Approx. 0.24 kg | Approx. 0.24 kg | |
| | Mount | 35 mm DIN rail mounting | 35 mm DIN rail mounting | |
| Environment | Protection Structure | IP20 | IP20 | |
| | Storage Temperature | -20° ~ 60° C (-4° ~ 140° F) | -20° ~ 60° C (-4° ~ 140° F) | |
| | Operating Temperature | 0° ~ 50° C (32° ~ 122° F) | 0° ~ 50° C (32° ~ 122° F) | |
| | Relative Humidity | 10% ~ 90% (non-condensing) | 10% ~ 90% (non-condensing) | |
| | Vibration Endurance | 10 to 25Hz (X, Y, Z direction 2G 30 minutes) | 10 to 25Hz (X, Y, Z direction 2G 30 minutes) | |
| Certificate | CE | CE marked | CE marked | |
| | UL | cULus Listed | cULus Listed | |
| Software | Weincloud | EasyAccess 2.0 (Optional) Dashboard (Optional) | EasyAccess 2.0 (Optional) Dashboard (Optional) | |
| | CODESYS | Optional | Optional | |

cMT-FHDX-820

cMT-SVRX-820 / 822



Front View



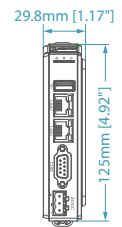
Side View



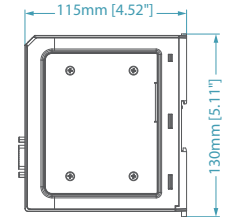
Top View



Bottom View



Front View



Side View



Top View



Bottom View

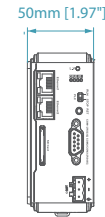
Other Model

Specifications & Dimensions

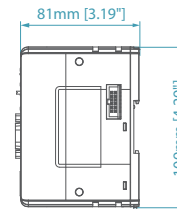


| Model | | cMT-CTRL01 | cMT-SVR-100 / 102 | cMT-SVR-200 / 202 |
|----------------------|--------------------------|---|---|---|
| Memory | Flash | 4 GB | 256 MB | 256 MB |
| | RAM | 512 MB | 256 MB | 256 MB |
| | Data, Memory, Code | 3 MB | N/A | N/A |
| | Retain area | 16 KB (every minute) (Kept after reboots) | N/A | N/A |
| | Persistent area | 16 KB (every minute) (Kept after downloads) | N/A | N/A |
| | File system | 8MB | N/A | N/A |
| Processor | | Dual-Core 32 bits RISC 1GHz | 32-bit RISC 600MHz | 32-bit RISC 600MHz |
| I/O Port | SD Card Slot | SD/SDHC | SD/SDHC | SD/SDHC |
| | USB Host | N/A | USB 2.0 x 1 | USB 2.0 x 1 |
| | Ethernet | Ethernet 1: 10/100/1000 Base-T x 1 Ethernet 2: 10/100 Base-T x 1 | 10/100/1000 Base-T x 2 | 10/100/1000 Base-T x 1 |
| | WiFi | N/A | N/A | IEEE 802.11 b/g/n 802.11b: max 18.01 dBm 802.11g: max 11.02 dBm 802.11n: max 12.20 dBm |
| | COM Port | COM1: RS-232 2W COM2: RS-485 2W/4W COM3: RS-485 2W | COM1: RS-232 COM2: RS-485 2W/4W COM3: RS-485 2W | COM1: RS-232 2W COM2: RS-485 2W/4W COM3: RS-485 2W |
| | Local bus | iBus | N/A | N/A |
| CODESYS | Protocol | Modbus TCP/IP Master, EtherCAT Master | N/A | N/A |
| RTC | | Built-in | Built-in | Built-in |
| Power | Input Power | 24±20%VDC | 24±20%VDC | 10.5~28VDC |
| | Power Isolation | Built-in | Built-in | Built-in |
| | Current for Internal Bus | Max 2A@5VDC | N/A | N/A |
| | Current Consumption | 550mA@5VDC | N/A | N/A |
| | Power Consumption | Nominal 310mA@24VDC | 230mA@24VDC | 1A@12VDC ; 450mA@24VDC |
| | Voltage Resistance | 500VAC (1 min.) | 500VAC (1 min.) | 500VAC (1 min.) |
| Isolation Resistance | Exceed 50MΩ @ 500VDC | Exceed 50MΩ @ 500VDC | Exceed 50MΩ @ 500VDC | |
| Specification | PCB Coating | Yes | Yes | Yes |
| | Enclosure | Plastic | Plastic | Plastic |
| | Dimensions WxHxD | 50 x 109 x 81 mm | 27 x 130 x 115 mm | 27 x 130 x 115 mm |
| | Weight | Approx. 0.24 kg | Approx. 0.18 kg | Approx. 0.18 kg |
| Environment | Mount | 35 mm DIN rail mounting | 35 mm DIN rail mounting | 35 mm DIN rail mounting |
| | Protection Structure | IP20 | IP20 | IP20 |
| | Storage Temperature | -20° ~ 70° C (-4° ~ 158° F) | -20° ~ 70° C (-4° ~ 158° F) | -20° ~ 70° C (-4° ~ 158° F) |
| | Operating Temperature | -10° ~ 50° C (14° ~ 122° F) | -20° ~ 55° C (-4° ~ 131° F) | -10° ~ 55° C (14° ~ 131° F) |
| | Relative Humidity | 10% ~ 90% (non-condensing) | 10% ~ 90% (non-condensing) | 10% ~ 90% (non-condensing) |
| | Vibration Endurance | 10 to 25Hz (X, Y, Z direction 2G 30 minutes) | 10 to 25Hz (X, Y, Z direction 2G 30 minutes) | 10 to 25Hz (X, Y, Z direction 2G 30 minutes) |
| Certificate | CE | CE marked | CE marked | CE marked |
| | UL | cULus Listed | cULus Listed | cULus Listed |
| Software | Weincloud | EasyAccess 2.0 (Optional) | EasyAccess 2.0 (Optional) | EasyAccess 2.0 (Optional) |
| | CODESYS | Built-in | N/A | N/A |

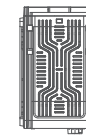
cMT-CTRL01 cMT-SVR-100 / 102 cMT-SVR-200 / 202



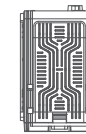
Front View



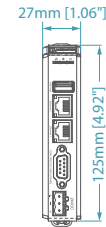
Side View



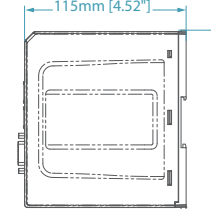
Top View



Bottom View



Front View



Side View



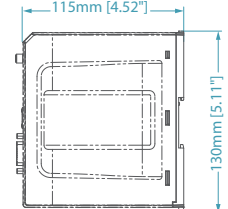
Top View



Bottom View



Front View



Side View



Top View



Bottom View



Communication Interface

iR Series Specifications

| Model | | iR-ETN | iR-COP | iR-ECAT |
|-----------------------------------|--------------------------|---|---|---|
| Expansion I/O module | Number of Bus Terminals | Depends on Power Consumption | Depends on Power Consumption | Depends on Power Consumption |
| | Digital Input Point | Max. 256 | Max. 256 | Max. 256 |
| | Digital Output Point | Max. 128 | Max. 128 | Max. 128 |
| | Analog Input Channel | Max. 64 | Max. 64 | Max. 64 |
| | Analog Output Channel | Max. 64 | Max. 64 | Max. 64 |
| Data Transfer Rate | | 10/100 Mbps | 50k~1 Mbps | 100 Mbps |
| Max. Number of TCP/IP Connections | | 8 Connections | - | - |
| Protocol | | Modbus TCP/IP Server, EtherNet/IP adapter | CANopen Slave | EtherCAT Slave |
| Isolation | | Network to Logic Isolation : Yes | CAN bus Isolation : Yes | Network to Logic Isolation : Yes |
| Power | Power Supply | 24 VDC (-15%/+20%) | 24 VDC (-15%/+20%) | 24 VDC (-15%/+20%) |
| | Power Consumption | Nominal 100mA@24VDC | Nominal 100mA@24VDC | Nominal 100mA @ 24VDC |
| | Current for Internal Bus | Max 2A@5VDC | Max 2A@5VDC | Max 2A@5VDC |
| | Current Consumption | 220mA@5VDC | 170mA@5VDC | 270mA@5VDC |
| | Power Isolation | Yes | Yes | Yes |
| | Back-up Fuse | ≤ 1.6A Self-recovery | ≤ 1.6A Self-recovery | ≤ 1.6A Self-recovery |
| | PCB Coating | Yes | Yes | Yes |
| Specification | Enclosure | Plastic | Plastic | Plastic |
| | Dimensions WxHxD | 27 x 109 x 81 mm | 27 x 109 x 81 mm | 27 x 109 x 81 mm |
| | Weight | Approx. 0.15 kg | Approx. 0.15 kg | Approx. 0.15 kg |
| | Mount | 35mm DIN rail mounting | 35mm DIN rail mounting | 35mm DIN rail mounting |
| | Protection Structure | IP20 | IP20 | IP20 |
| Environment | Storage Temperature | -20° ~ 70° C (-4° ~ 158° F) | -20° ~ 70° C (-4° ~ 158° F) | -20° ~ 70° C (-4° ~ 158° F) |
| | Operating Temperature | 0° ~ 55° C (32° ~ 131° F) | 0° ~ 55° C (32° ~ 131° F) | 0° ~ 55° C (32° ~ 131° F) |
| | Relative Humidity | 10% ~ 90% (non-condensing) | 10% ~ 90% (non-condensing) | 10% ~ 90% (non-condensing) |
| Certification | EMC Immunity | Conforms to EN 55032: 2012+AC: 2013, Class A EN 61000-6-4: 2007+A1:2011 EN 55024: 2010+A1: 2015 EN 61000-6-2:2005 | Conforms to EN 55032: 2012+AC: 2013, Class A EN 61000-6-4: 2007+A1:2011 EN 55024: 2010+A1: 2015 EN 61000-6-2:2005 | Conforms to EN 55032: 2012+AC: 2013, Class A EN 61000-6-4: 2007+A1:2011 EN 55024: 2010+A1: 2015 EN 61000-6-2:2005 |
| | UL | cULus Listed | cULus Listed | cULus Listed |

Communication Interface

Specifications



| Model | | iR-ETN40R |
|-----------------------------------|--------------------------|--|
| Expansion I/O Module | No. of Bus Terminals | Depends on Power Consumption |
| | Digital Input Point | Max. 224 |
| | Digital Output Point | Max. 112 |
| | Analog Input Channel | Max. 64 |
| | Analog Output Channel | Max. 64 |
| Data Transfer Rate | | 10/100 Mbps |
| Max. Number of TCP/IP Connections | | 8 connections |
| Protocol | | Modbus TCP Server, EtherNet/IP adapter |
| Isolation | | Network to Logic Isolation : Yes |
| No. of Ports | | 1 |
| Digital Output | | |
| | Total Number of Outputs | 16 |
| | Output Logic | Relay |
| | Output Voltage | 250VAC/30VDC |
| | Output Current | 2A per channel (Max 8A) |
| Digital Input | | |
| Total Number of Inputs | | 24 |
| General Input | | |
| | Input Logic | Sink or Source |
| | Number of Inputs | 20 |
| | Logic 1 Input Voltage | 15~28 VDC |
| | Logic 0 Input Voltage | 0~5 VDC |
| | Input Impedance | 5.6 K Ω |
| High-speed Input | | |
| | Number of Inputs | 4 |
| | Input Logic | SINK INPUT (PNP) |
| | Logic 1 Input Voltage | 15~28 VDC |
| | Logic 0 Input Voltage | 0~5 VDC |
| | Max. Input Frequency | 20KHz |
| | Input Impedance | 3 K Ω |
| Isolation | | Input: Yes, optical isolation, Output: Yes, electromagnetic isolation |
| Power | | |
| | Power Supply | 24 VDC (-15%/+20%) |
| | Power Consumption | Nominal 255mA @ 24VDC |
| | Current for Internal Bus | Max 2A @ 5VDC |
| | Current Consumption | 520mA @ 5VDC |
| | Power Isolation | Yes |
| | Back-up Fuse | $\leq 1.6A$ Self-recovery |
| Specification | | |
| | PCB Coating | Yes |
| | Enclosure | Plastic |
| | Dimensions WxHxD | 64x 109 x 81 mm |
| | Weight | Approx. 0.27 kg |
| | Mount | 35mm DIN rail mounting |
| Environment | | |
| | Protection Structure | IP20 |
| | Storage Temperature | -20° ~ 70° C (-4° ~ 158° F) |
| | Operating Temperature | -10° ~ 60° C (14° ~ 140° F) |
| | Relative Humidity | 10% ~ 90% (non-condensing) |
| Certificate | | Conforms to |
| | EMC Immunity | EN 55032: 2012+AC: 2013, Class A; EN 61000-6-4: 2007+A1:2011; EN 55024: 2010+A1: 2015; EN 61000-6-2:2005 |

Digital Input/Output

Specifications

| Model | | iR-DI16-K | iR-DM16-P | iR-DM16-N | iR-DQ16-P | iR-DQ16-N | iR-DQ08-R |
|---------------------------------|-----------------------|--|---|---|---|---|---|
| Input Logic | | Sink or Source | Sink or Source | Sink or Source | N/A | N/A | N/A |
| Number of Inputs | | 16 | 8 | 8 | 0 | 0 | 0 |
| Output Logic | | N/A | Source | Sink | Source | Sink | Relay |
| Number of Outputs | | 0 | 8 | 8 | 16 | 16 | 8 |
| Current Consumption | | 83mA@5VDC | 130mA@5VDC | 130mA@5VDC | 196mA@5VDC | 205mA@5VDC | 220mA@5VDC |
| HIGH Level Input Voltage | | 15~28VDC | 15~28VDC | 15~28VDC | N/A | N/A | N/A |
| LOW Level Input Voltage | | 0~5 VDC | 0~5 VDC | 0~5 VDC | N/A | N/A | N/A |
| Output Voltage | | N/A | 11~28VDC | 11~28VDC | 11~28VDC | 11~28VDC | 250VAC/ 30VDC |
| Output Current | | N/A | 0.5A per channel (Max 4A) | 0.5A per channel (Max 4A) | 0.5A per channel (Max 4A) | 0.5A per channel (Max 4A) | 2A per channel (Max 8A) |
| Isolation | | Input: Optical Isolation Output: N/A | Input: Optical Isolation Output: Optical Isolation | Input: Optical Isolation Output: Optical Isolation | Input: N/A Output: Optical Isolation | Input: N/A Output: Optical Isolation | Input: N/A Output: Electromagnetic Isolation |
| Specification | Enclosure | Plastic | | | | | |
| | Dimensions WxHxD | 27 x 109 x 81 mm | | | | | |
| | Weight | Approx. 0.12 kg | | | | | |
| | Mount | 35mm DIN rail mounting | | | | | |
| Environment | Protection Structure | IP20 | | | | | |
| | Storage Temperature | -20° ~ 70° C (-4° ~ 158° F) | | | | | |
| | Operating Temperature | 0° ~ 55° C (32° ~ 131° F) | | | | | |
| | Relative Humidity | 10% ~ 90% (non-condensing) | | | | | |
| Connection | Cross-section | AWG 28-16 | | | | | |
| Certification | EMC Immunity | Conforms to EN 55032: 2012+AC: 2013, Class A; EN 61000-6-4: 2007+A1:2011; EN 55024: 2010+A1: 2015; EN 61000-6-2:2005 | | | | | |
| | UL | cULus Listed | | | | | |

Analog Input/Output

Specifications

| Model | | iR-AI04-VI | iR-AM06-VI | iR-AQ04-VI |
|---------------------------------|-----------------------|--|---------------------------------------|---------------------------------------|
| Number of Analog Inputs | | 4 (±10V/ ±20mA) | 4 (±10V/ ±20mA) | 0 |
| Number of Analog outputs | | 0 | 2 (±10V/ ±20mA) | 4 (±10V/ ±20mA) |
| Current Consumption | | 70mA@5VDC | 70mA@5VDC | 65mA@5VDC |
| Analog Power Supply | | 24 VDC(20.4 VDC~28.8 VDC) (-15%~+20%) | 24 VDC(20.4 VDC~28.8 VDC) (-15%~+20%) | 24 VDC(20.4 VDC~28.8 VDC) (-15%~+20%) |
| Specification | PCB Coating | Yes | | |
| | Enclosure | Plastic | | |
| | Dimensions WxHxD | 27 x 109 x 81 mm | | |
| | Weight | Approx. 0.12 kg | | |
| | Mount | 35mm DIN rail mounting | | |
| Environment | Protection Structure | IP20 | | |
| | Storage Temperature | -20° ~ 70° C (-4° ~ 158° F) | | |
| | Operating Temperature | 0° ~ 55° C (32° ~ 131° F) | | |
| | Relative Humidity | 10% ~ 90% (non-condensing) | | |
| Connection | Cross-section | AWG 28-16 | | AWG 24-16 |
| Certification | EMC Immunity | Conforms to EN 55032: 2012+AC: 2013, Class A; EN 61000-6-4: 2007+A1:2011; EN 55024: 2010+A1: 2015; EN 61000-6-2:2005 | | |
| | UL | cULus Listed | | |

Temperature

Specifications



| Model | | iR-AI04-TR |
|--------------------------|-----------------------|---|
| Number of Input Channels | | 4 (RTD/Thermocouple) |
| Current Consumption | | 65mA@5VDC |
| Analog Power Supply | | 24 VDC(20.4 VDC~28.8 VDC) (-15%~+20%) |
| Specification | PCB Coating | Yes |
| | Enclosure | Plastic |
| | Dimensions WxHxD | 27 x 109 x 81 mm |
| | Weight | Approx. 0.12 kg |
| | Mount | 35mm DIN rail mounting |
| Environment | Protection Structure | IP20 |
| | Storage Temperature | -20° ~ 70° C (-4° ~ 158° F) |
| | Operating Temperature | 0° ~ 55° C (32° ~ 131° F) |
| | Relative Humidity | 10% ~ 90% (non-condensing) |
| Connection | Cross-section | AWG 28-16 |
| Certification | EMC Immunity | Conforms to EN 55032: 2012+AC: 2013, Class A; EN 61000-6-4: 2007+A1:2011; EN 55024: 2010+A1: 2015; EN 61000-6-2:2005 |
| | UL | cULus Listed |

Motion Control

Specifications



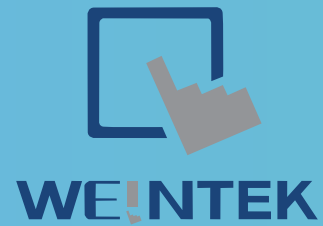
| Model | | iR-PU01-P |
|--------------------------|-----------------------|---|
| | | Digital input/ output |
| | | Differential input/ output |
| Input Logic | | Sink Input |
| Number of Inputs | | 4 |
| Output Logic | | Source Output |
| Number of Outputs | | 4 |
| HIGH Level Input Voltage | | 15~28 VDC |
| LOW Level Input Voltage | | 0~5 VDC |
| Input current | | 24 VDC, 5 mA |
| Input Impedance | | 3 KΩ |
| Indicators | | Red LED Input State |
| Output Voltage | | 24VDC |
| Output Current | | 50 mA |
| Max. input frequency | | 200KHz |
| Max. Output frequency | | 40KHz |
| Number of Axis | | 1- Axis |
| Specification | PCB Coating | Yes |
| | Enclosure | Plastic |
| | Dimensions WxHxD | 27 x 109 x 81 mm |
| | Weight | Approx. 0.12 kg |
| | Mount | 35mm DIN rail mounting |
| Environment | Protection Structure | IP20 |
| | Storage Temperature | -20° ~ 70° C (-4° ~ 158° F) |
| | Operating Temperature | 0° ~ 55° C (32° ~ 131° F) |
| | Relative Humidity | 10% ~ 90% (non-condensing) |
| Connection | Cross-section | AWG 28-16 |
| Certification | EMC Immunity | Conforms to EN 55032: 2012+AC: 2013, Class A; EN 61000-6-4: 2007+A1:2011; EN 55024: 2010+A1: 2015; EN 61000-6-2:2005 |
| | UL | cULus Listed |

*The terms HDMI, HDMI High-Definition Multimedia Interface, and the HDMI Logo are trademarks or registered trademarks of HDMI Licensing Administrator, Inc.

*CODESYS® is a trademark of CODESYS GmbH.

*Other company names and product names in this document are the trademarks or registered trademarks of their respective companies.

All information contained in this brochure is subject to change without notice.



Proudly serving North American Manufacturers, OEMs and System Integrators by providing leading edge graphic operator interfaces (AKA Human Machine Interfaces). Following the tradition of Weintek Labs., Inc. (founded in 1995); our company leverages decades of experience as HMI specialists leading the industry with undisputed state-of-the-art technology. Our mission is to look beyond the norm to provide our customers with high quality products, world-class service and efficient control automation solutions.

Weintek USA., Inc.

Website: www.weintekusa.com

Phone: +1-425-488-1100 | Fax: +1-425-415-6206

Sales: sales@weintekusa.com | Technical Support: support@weintekusa.com

Address: Weintek USA., Inc. 6219 NE 181st Street, Suite # 120 Kenmore, WA 98028



WEINTEK and the WEINTEK logos are trademarks or registered trademarks of Weintek Labs., Inc. in many countries.
© 2023 All rights reserved.